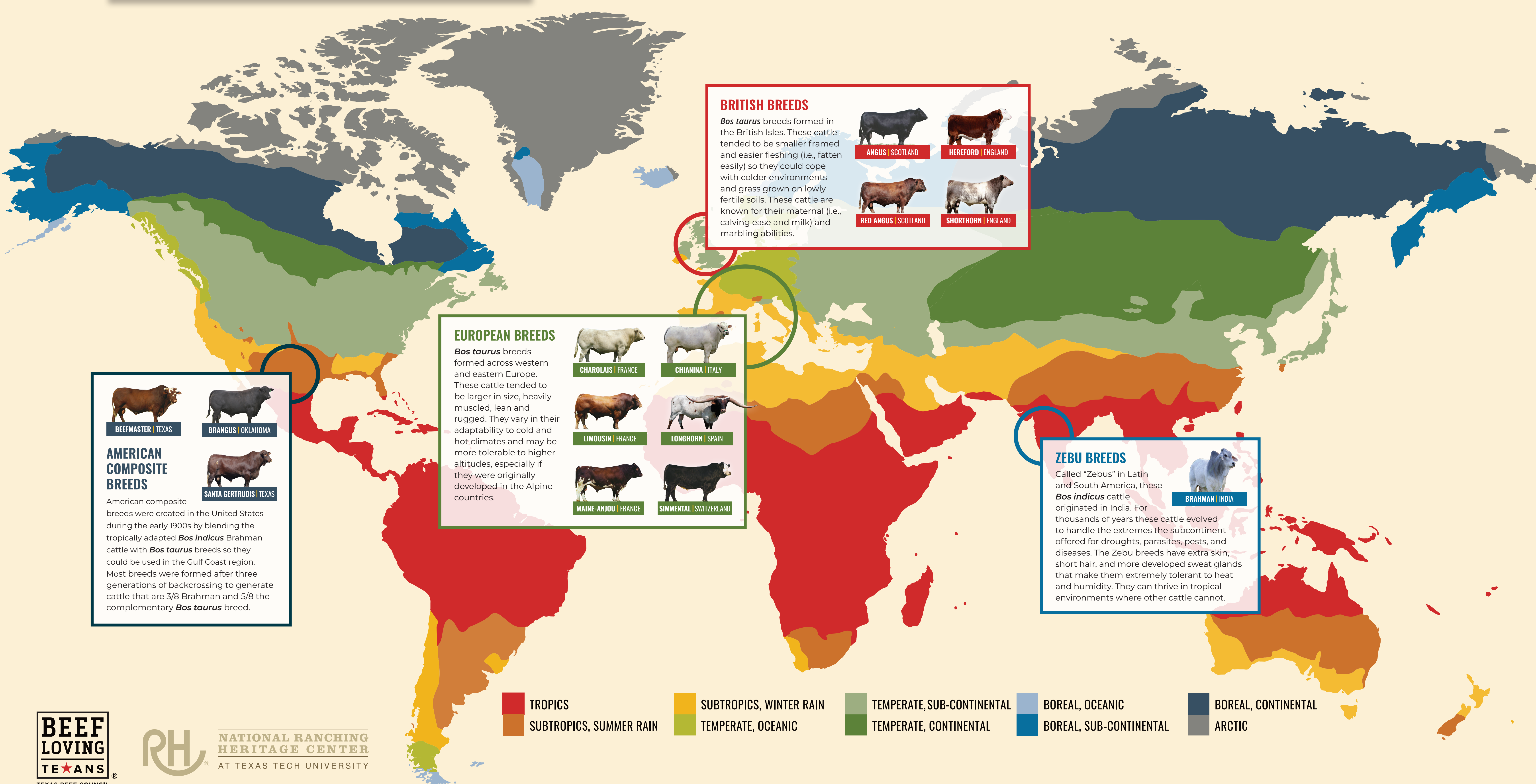


CATTLE ORIGINS

by climate

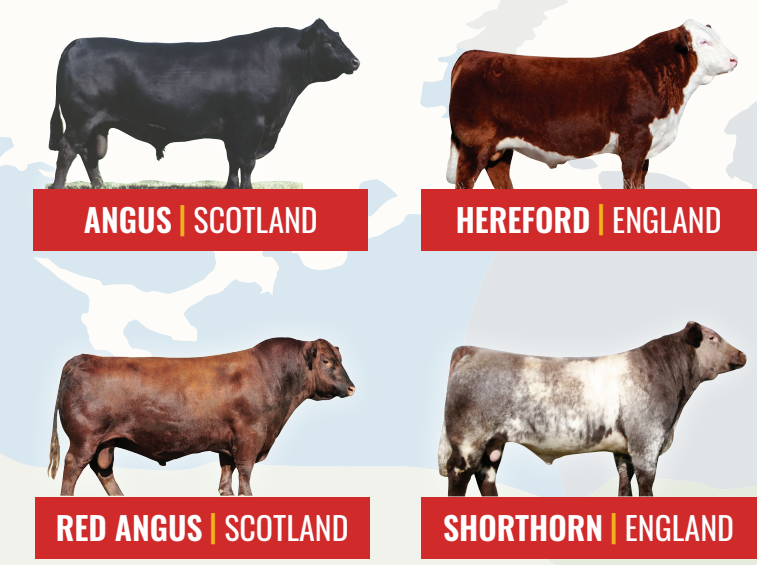
Cattle breeds initially evolved in regions across the British Isles, continental Europe, and southern Asia based upon the prevailing conditions of their localized environment. Settlement of the western world brought with it these uniquely adapted cattle. Today, many different breeds are needed to complement the diverse climates of North America.

Cattle are classified by four major categories with each category having similar characteristics that have evolved within a particular region.



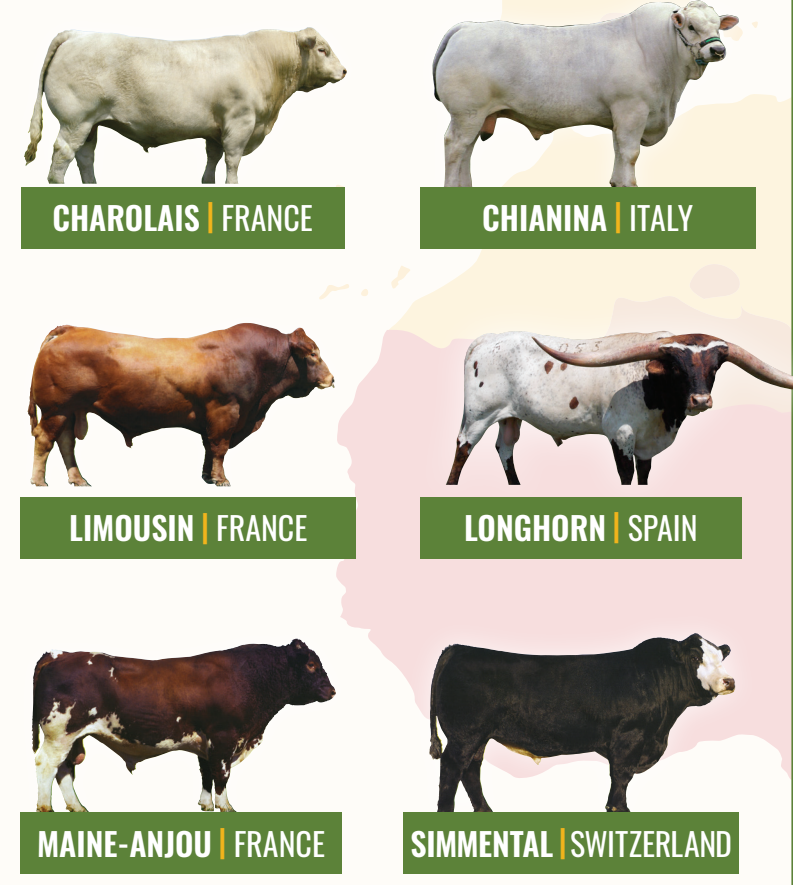
BRITISH BREEDS

Bos taurus breeds formed in the British Isles. These cattle tended to be smaller framed and easier fleshing (i.e., fatten easily) so they could cope with colder environments and grass grown on lowly fertile soils. These cattle are known for their maternal (i.e., calving ease and milk) and marbling abilities.



EUROPEAN BREEDS

Bos taurus breeds formed across western and eastern Europe. These cattle tended to be larger in size, heavily muscled, lean and rugged. They vary in their adaptability to cold and hot climates and may be more tolerable to higher altitudes, especially if they were originally developed in the Alpine countries.



AMERICAN COMPOSITE BREEDS

American composite breeds were created in the United States during the early 1900s by blending the tropically adapted *Bos indicus* Brahman cattle with *Bos taurus* breeds so they could be used in the Gulf Coast region. Most breeds were formed after three generations of backcrossing to generate cattle that are 3/8 Brahman and 5/8 the complementary *Bos taurus* breed.

ZEBU BREEDS

Called "Zebus" in Latin and South America, these *Bos indicus* cattle originated in India. For thousands of years these cattle evolved to handle the extremes the subcontinent offered for droughts, parasites, pests, and diseases. The Zebu breeds have extra skin, short hair, and more developed sweat glands that make them extremely tolerant to heat and humidity. They can thrive in tropical environments where other cattle cannot.



- TROPICS
- SUBTROPICS, WINTER RAIN
- TEMPERATE, SUB-CONTINENTAL
- BOREAL, OCEANIC
- BOREAL, CONTINENTAL
- SUBTROPICS, SUMMER RAIN
- TEMPERATE, OCEANIC
- TEMPERATE, CONTINENTAL
- BOREAL, SUB-CONTINENTAL
- ARCTIC

